

BRYANT, Arkansas

Named One of the TOP 100 Small Towns in America!

By CNN Money magazine

THE CITY AT A GLANCE

- **METRO LITTLE ROCK ALLIANCE Population: 1,000,000**
- **One of Arkansas Fastest Growing Cities**
- **Highly Educated Workforce**
- **High Quality of Life**
- **Exceptionally Low Crime Rate**

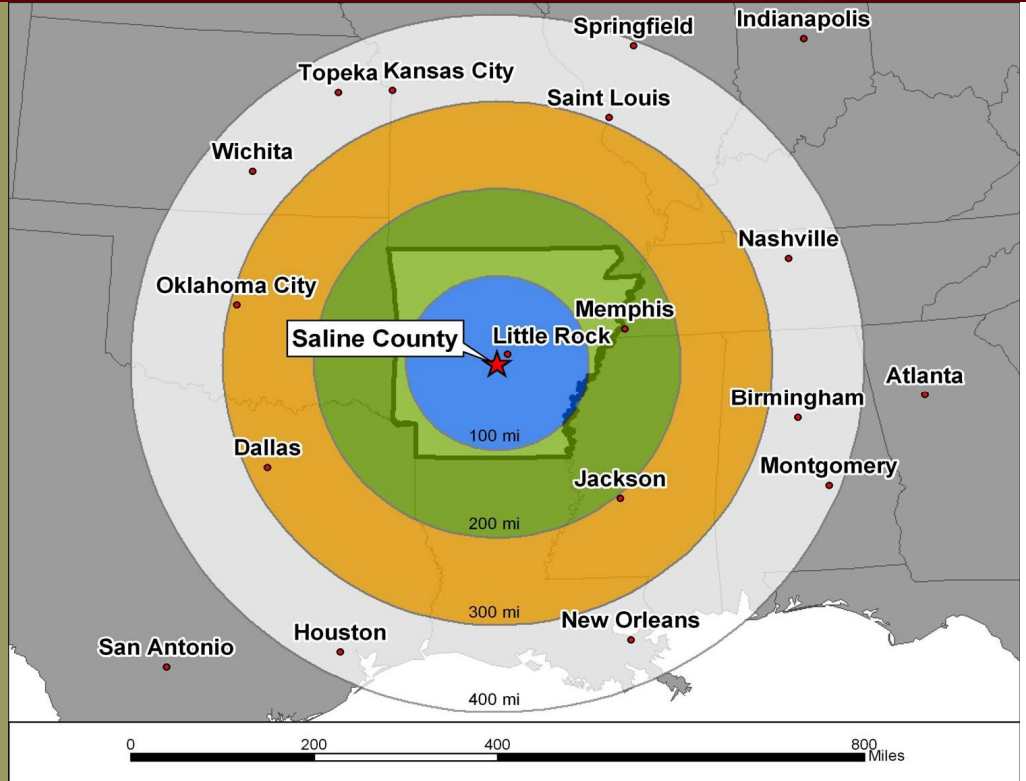
WORKFORCE

White Collar Profession	66.1%
Blue Collar Profession	18.3%
Service Profession	15.5%

INFRASTRUCTURE

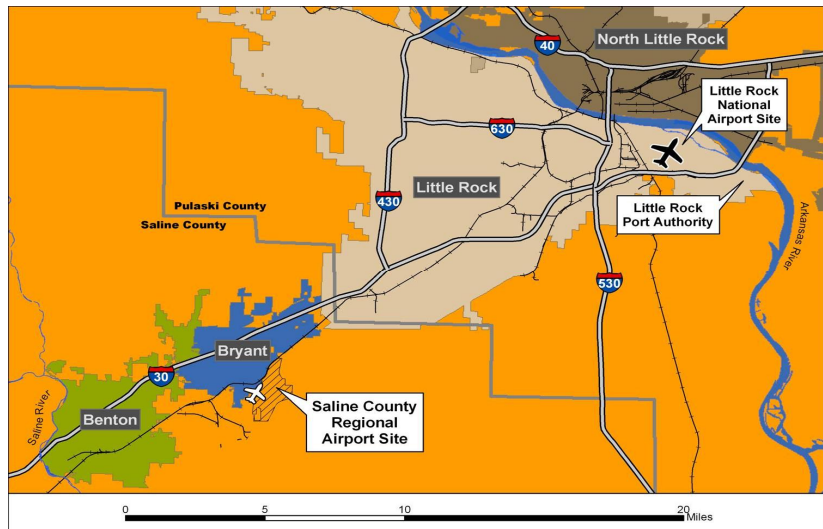
UP Railroad
Interstate 30 and Hwy 5
Little Rock National Airport
Saline County Regional Airport
Fiber Optic Ring
High Speed Internet Access

Bryant Area Chamber of Commerce
Rae Ann Fields, Director
(501) 847-4702
bryant.chamber@bryant-ar.com



BRYANT: A GROWING COMMUNITY

The City of Bryant is located just 10 miles southwest of Little Rock. Bryant offers business geographical advantages with attractive business opportunities that include an excellent transportation infrastructure, access to a growing workforce population with a great quality of life, and a low cost of doing business.



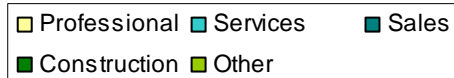
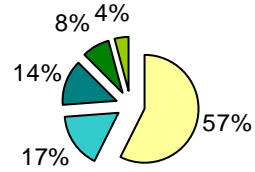
Area Statistical Information

Within 20 minute Drive Range

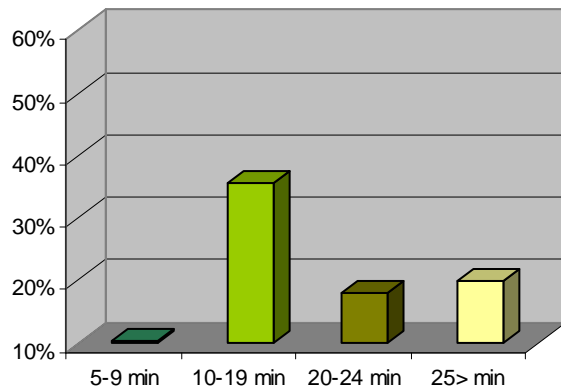
# of Households	80,610
Average HH Size	2.39
Median Age	35.5
Bachelor's Degree+	25.8%
Homeowners	81.5%
Average Family Income	\$77,164
Disposable Income	\$53,716

Source: Census Bureau and the Arkansas Department of Economic Development

Occupation Within 20 minute Drive Range



Workforce Travel Time within 30 minute Drive Range



Bryant Population

1995	2000	2010	Growth Rate
5,269	9,764	18,432 Metro Plan 16,660 Census	88%

Saline County Population

1995	2000	2009	2011
55,680	69,764	102,343	103,237